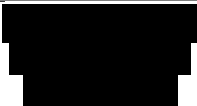




Pre-Purchase C & V Report

1983 Bayliner 32





Prepared For: Thomas Rose
Prepared By: [REDACTED] Marine Surveyor, S.A.M.S. - SA

Scope of Inspection of the Vessel

Date of Inspection: April 8th, 2024

Location: San Diego, California

Weather During Inspection: Sunny

Inspection Conducted by: [REDACTED] Marine Surveyor, S.A.M.S. – SA

- The vessel was inspected afloat.
- Underwater fittings were not inspected.
- A sea trial was not conducted during the survey.
- Hull and deck fittings were subjected to close visual inspection.
- The deck, cockpit sole, and coach roof were subjected to random percussion soundings.
- The interior structure of the vessel was closely inspected and subjected to percussion soundings where relevant.
- Certain parts of the vessel's structure, systems, and equipment could only be inspected by destructive means and therefore no tools or machinery were used for this survey. In addition, there were no core samples taken or inspected unless noted.
- The installation and external condition of machinery, plumbing, electrical systems, and electronics were visually inspected and operated with permission of the owner or their representative. There has been no disassembly of any components mentioned above.
- No mechanical tests were performed on this survey for the propulsion machinery or generator.
- No compression tests were conducted.
- No fluid samples were taken.
- The plumbing, wiring, and casings were only inspected visually.
- Batteries and their installation were visually inspected and only load tested if noted.
- Electronic and electrical equipment were tested by powering up and observing basic function.
- There were no calibration or adjustments made to this equipment.
- If this report did not discuss a specific item, equipment, or machinery, it was not covered by this inspection. Small defects such as loose hinges, minor scratches, or chips in the cosmetic finish where regular wear and tear took place will not be included in this report.
- Issues not affecting the value of the vessel will not be included in the report.



Scope of Market Analyses

Valuation was determined by the following:

- Comparisons with other similar vessels recently sold and/or listed in current publications.
- Standard industry pricing guides such as Soldboats.com and BUC ValuProfessional.
- Current asking prices on brokerage sites or YachtWorld.com.

Adjustments were made for differences in equipment and condition.

Limiting Conditions

Descriptions are based on visual examination as set forth in the section “Scope of Inspection of the Vessel” of this report. The assigned valuation assumes that components, systems, and equipment not accessible or proven during the inspection were in fact in good condition and operational. If this is not true than the value of the vessel may be significantly lower.

There is no guarantee or warranty, expressed or implied, as to the suitability of the vessel, or equipment.

This report can only be of value considering the condition of the vessel the day of inspection. Having delivered this survey there are no more obligations and concludes the obligation of the request for survey.

Tankage will be inspected from visible surfaces only and no opinion of their overall condition will be rendered. The condition and age of the fuel (and water) and the integrity of the tanks (fuel, water and holding) is beyond the scope of this survey. Please consider filling all tanks for a simple, practical test of their integrity. Accuracy of tank level gauges is beyond the scope of this survey.



VESSEL SPECIFICATIONS

Name of Vessel Silver Fox	Hailing Port Downey, California	Hull ID Number BLBA10EK0783-4
Documentation Number 1073950	Type Motor Yacht	Builder Bayliner
Designer Unknown	Model Year 1983	Model 3270
LOA 32 feet 1 inch	Draft 2 feet 11 inches	Beam 11 feet 6 inches
Dry Weight 12,500 pounds	Fuel Capacity 200 gallons	Potable Water Capacity 65 gallons
Black Water Capacity 23 gallons	Last Hauled Unknown	

DESIGN AND CONSTRUCTION OF VESSEL – See Secondary

Design Molded fiberglass production powerboat	Hull Fiberglass unknown core, white color
Propulsion Inboard gasoline, stainless steel propeller shafts	Interior Structure Plywood bulkheads with fiberglass bilge structure
Decks Fiberglass unknown core with molded non-skid	Cockpit Fiberglass unknown core with molded non-skid
Superstructure Fiberglass unknown core	Hull to Deck Joint Mechanically fastened
Rub Rail Aluminum and rubber	

ACCOMMODATIONS

Layout
Forepeak cabin, port amidships galley, starboard amidships galley head, aft salon, port aft pilot berth



RUDDER AND STEERING GEAR

Rudder Type

Not inspected

Packing Gland

Above the waterline

Rudder Stock

Stainless steel with bronze tiller arms – bonded

Auto Pilot

Hydraulic

Steering Gear

Single hydraulic cylinder with steel tie rod

THROUGH HULL FITTINGS AND PLUMBING – See Secondary

Through Hulls

Plastic and stainless steel above the waterline

Valves

Bronze ball valves with stainless steel clamps – bonded

Hoses

Reinforced with stainless steel clamps

Transducers

Depth – starboard amidships

HATCHES, WINDOWS, AND PORT LIGHTS – See Secondary

Deck Hatches

[1] Fiberglass anchor well, [1] Aluminum framed polycarbonate vent/escape – bow, [2] fiberglass – cockpit

Fixed Port Lights

Aluminum framed polycarbonate venturi, [8] aluminum framed polycarbonate – coachroof, [2] wood framed polycarbonate – coachroof

Opening Ports/Portholes

[4] Aluminum framed polycarbonate slider – coachroof, [4] plastic framed polycarbonate – side hulls

Companionway

Wood framed polycarbonate slider - aft



RAILS, STANCHIONS, LIFELINES, AND LADDERS – See Recommendations

Pulpit and Stern Rail

Mechanically fastened pulpit, stainless steel
bow railing, raised fiberglass stern bulwarks

Stanchions

[31] Stainless steel

Gates

None

Swim Ladder

None

Grab Rails

Stainless steel and wood

FRESH WATER SYSTEM

Tanks

Inaccessible

Piping

Reinforced – softwall hose

Hot Water

Seaward 6-gallon – AC and engine coolant
exchange

Pumps

Jabsco 37202

Filtration

None

City Water Connection

None

LPG SYSTEM – See Recommendations

Tanks

[1] Aluminum

Plumbing

High pressure softwall hose with swaged ends

Gauge

Tested at 125-psi

Regulator

Yes



HEADS AND SANITATION (MSD)

Heads

Vacuflush

Holding Tank

Plastic rotomolded – starboard amidships

bilge

Waste Pump

Sealand diaphragm

Discharge

Into the tank

Level Indicator

Wema analog

BILGES AND BILGE PLUMBING – See Secondary

Electric Bilge Pump

Rule 1500 with float switch – engine space,

Rule 500 GPH with float switch – under pilot

berth floor

High Water Alarm

None

Discharge Hoses

Suitable for intended purpose

Sump Pump

None

GENERATOR - None

EXHAUST SYSTEM – See Recommendations

Type

Wet exhaust – exits aft

Muffler

None

Hoses

Reinforced – double clamped



ENGINE

Twin Engine Application

Make

Crusader

Model

CH165

Port Serial Number/Engine Hours

40572/1703.3 hours

Output

Unknown

Cooling System

Closed cooling system with raw water exchange

Engine Compartment Blower

12-volt

Transmission

Unknown (no spec plate)

Number of Cylinders

Six

Type

Inboard gasoline

Starboard Serial Number/Engine Hours

40580/1664.6 hours

Aspiration

Natural

Gauges

Tachometer, oil pressure, temperature, alternator voltage

Engine Control

2 station - Push pull single function levers

FUEL SYSTEM – See Secondary

Tanks

[2] Aluminum – outboard engines

Filters

Cannister

Vent Hoses

Fuel rated

Fuel Shut Off

Forward engine space

Fuel Gauges

Analog

Fuel Fill Hoses

Fuel rated – double clamped

Fuel Distribution

Forward engine space

Grounding

Yes

DRIVETRAIN – See Secondary

Propeller

Not inspected

Shaft Seal

Bronze compression

Propeller Shaft

1 1/4" stainless steel

Propeller Shaft Strut

Not inspected



ELECTRICAL SYSTEM – See Secondary

Power Source/Voltage

[2] Group 27 wet cell

Secured

Yes

Charging System

AC to DC charger and engine alternators

Battery Cables

Multi-strand

Distribution

Helm switches

Location

Port engine space

Battery Switches

Port engine space

Battery Monitor

Analog

Terminal Covers

Yes

AC SYSTEM – See Recommendations

Power Source/Voltage

[1] 30-amp/125-volt shore power inlet –
starboard amidships

Main Shore Power Breaker

Factory panel – starboard salon

Shore Power Cords

None

Circuits

[1] 120

Reverse Polarity Indicator

Yes

Charger

Xantrex True Charge 20+ - 20-amp

Distribution

Factory panel – starboard salon

Receptacles

GFCI protected

WIRING – See Secondary

Reverse Polarity

Not checked

Ground Neutral Connection

Not checked





GROUND TACKLE AND MOORING EQUIPMENT

Anchor Roller

Plastic and stainless steel

Anchors

[1] Danforth style

Mooring Equipment

Aluminum cleat sets

Windlass

Scott and Fitzef Powerwinch

Rhode

1/4" chain and 1" Rhode

CANVAS

Dodger

Isinglass and blue canvas

Covers

Blue canvas - winch

Bimini

Stainless steel frame and blue canvas

FIRE FIGHTING EQUIPMENT – See Recommendations

Portable Fire Extinguishers

[2] ABC B1 manufacture 2015

Fixed Fire Extinguishers

[1] Fire Boy unknown model and manufacture date, last certified 2016, [1] Fire Boy FE241 unknown manufacture date, no certification

Smoke Detector

First Alert

CO₂ Detector

None

SAFETY EQUIPMENT – See Secondary

Personal Floatation Devices

[8] Type II

Flares

[10] Orion expired 2022

First Aid Kit

Ready America

Life Ring

[1] Type IV cushion

Distress Flag

None



NAVIGATION INSTRUMENTS/ELECTRONICS – See Recommendations

Compass

[2] Ritchie

GPS

Raytheon, Garmin

Autopilot

Simrad Robertson AP11, Simrad Robertson R3000X

Multi-function Display

Furuno 1712, Furuno FCV-582L, Raytheon RC420, Garmin GPS map 176c

Radar

Furuno

Tri-data

Aqua Meter 550

VHF

Standard Horizon Quest

NAVIGATION EQUIPMENT – See Recommendations

Navigation Lights

Separate side, stern and steaming lights

Sound Producing Device

Ship's horn

MISCELLANEOUS EQUIPMENT

- Magam stainless steel grill
- Standup paddle board holder
- Windshield wipers
- Bennett trim tabs
- Samsung TV
- Hillerange stove/oven
- Red Dot unknown BTUs heater
- Rod holders
- Piranha 357-013-10 bait tank pump
- Pioneer MVH-290BT stereo
- Xintex M-2 vapor control
- Galanz microwave
- Magic Chef mini-fridge

COMMENTS

This 1983 Bayliner 3270 is a molded fiberglass production powerboat. The owner was available for comment about any incidents, accidents, or submersions.

The owner stated that he has owned the vessel for 2 weeks and there have been no major incidents, accidents, or submersions.



SECONDARY RECOMMENDATIONS

The **exterior** of the vessel is in fair condition.

1. There is various mold on the rub rail. Clean and protect.
2. There is a cracked hole on the port side of the fiberglass anchor hatch. Determine the significance and repair if necessary.
3. Various flybridge ladder mounts are corroded. Consider replacing.
4. The cockpit stanchion rail, grab rail, companionway and aft window frame wood is deteriorated. Resurface the wood to restore finish.
5. The wood at the starboard aft coachroof in the cockpit is water damaged and detached from the hull. Have a reputable marine shipwright determine the significance and repair as necessary to prevent water ingress.
6. The flybridge cushions are dirty. Clean the cushions.

The **interior** of the vessel is in average condition.

7. The bilge pump access in the floorboard in the pilot berth sits approximately one inch lower than the floor. Repair or replace the floorboard to sit flush with the floor to prevent a potential trip hazard.
8. The steps to the pilot berth are broken off the mount. Repair or replace to prevent a potential falling hazard.

The **mechanical systems** are in fair condition.

9. One of the flybridge stanchion mounts is missing a screw. Install a screw to secure the mount.
10. The exhaust riser connection on the port and starboard engines are rusted. Have a reputable marine mechanic determine the significance and replace IF necessary.
11. One of the starboard engine coolant hoses is cracked. Replace the hose to restore integrity.
12. The port and starboard engine motor mounts are rusted and part of the port aft mount on the port engine is cracked in half. Replace the motor mounts.
13. The date on the oil filters is marked 11/8/17 and the engine oil is broken. Change the oil and filters.
14. There is various surface rust on the port and starboard engine. Descale, clean, protect and monitor.
15. There is running oil stains on top of the port and starboard engine manifolds. Have a reputable marine mechanic determine the origin, service or repair if necessary and clean the engine.
16. There is calcium build up on the port and starboard carburetor air filters. Descale, clean, protect and monitor.
17. There is heavy sediment in the port and starboard engine sea strainers. Clean the sea strainers to allow water to flow freely to the engines.
18. The waste pump is not secure. Secure the pump.



SECONDARY RECOMMENDATIONS *continued...*

19. The starboard engine water pump is heavily rusted and the port engine water pump has heavy calcium buildup. Replace the starboard water pump as necessary. Descale, clean, protect and monitor the port engine pump. Assess the impellers and replace if necessary.
20. The starboard raw water intake hose is cracked and the clamps are rusted at the water pump. Replace the hose and clamps.
21. The stove burner control knobs are seized so the stove could not be tested. Repair or replace and prove operational.

The **plumbing systems** are in fair condition.

22. The starboard raw water engine intake through hull valve does not open and close. Service or replace and prove operational with reasonable force.
23. There are absorbent pads under the port and starboard engines with oil and rust spots. Determine the source and service or repair if necessary.
24. There is heavy calcium buildup at the port and starboard shaft seals and the seal boot clamps are rusted. Descale, clean, protect and monitor the shafts and replace the boot clamps.
25. The steering hydraulic reservoir is at 11-psi. Fill to factory specifications of 25-30-psi.
26. There is a rigid plastic pipe with a valve that runs from the port cockpit cupboard to the under the sink in the pilot berth but is not connected to anything. Remove the pipe or connect to a system to prevent potential water ingress.
27. The head does not draw water. Have a reputable marine plumber determine the cause, service or replace and prove operational.
28. The cold side of the head faucet does not dispense water. Have a reputable marine plumber determine the cause, service or replace and prove operational.

The **electrical systems** are in fair condition.

29. The bait tank pump does not energize. Repair or replace and prove operational.
30. One of the cockpit overhead lights does not illuminate. Repair or replace and prove operational.
31. The Robertson AP11 autopilot control does not energize. Repair or replace and prove operational.
32. The Furuno FCV-58ZL MFD does not energize. Repair or replace and prove operational.
33. The Raytheon RC425 chart plotter energizes but the display is blacked out. Repair or replace and prove operational.
34. Various salon overhead lights do not illuminate. Repair or replace and prove operational.
35. The Aqua Meter depth sounder sounds an alarm and displays "No Echo". Repair or replace and prove operational.
36. Shore power was not provided so the AC electrical system could not be tested.
37. The pilot berth overhead light does not illuminate. Repair or replace and prove operational.



SECONDARY RECOMMENDATIONS *continued...*

38. There is a detached electrical wire from the aft starboard engine. Connect to a system or remove back to its source.

39. The forepeak cabin lights do not illuminate. Repair or replace and prove operational. The **safety systems** are in satisfactory condition.

40. There is no audible high-water alarm. Install an alarm per ABYC standards.

Overall, the vessel is in satisfactory condition and with recommendations attended to it should be suitable for its intended purpose.

RECOMMENDATIONS

1. The swim ladder is missing from the starboard swim step. Ensure a reboarding ladder is aboard the vessel per NOAA 50 CFR and ABYC H-41.10.1.
2. There is no anchor light. Repair or replace and prove operational per USCG 33 CFR 183 subpart M.
3. There is rust on various exhaust hose clamps in the engine and steering space. Replace the clamps per ABYC P.7.1.10.1.
4. One of the connecting starboard exhaust hoses is cracked at the clamps. Replace the hose as necessary per ABYC P-1.7.1.5.
5. The fuel fill hose clamps are rusted at the fill and the starboard hose is cracked. Replace the hose per ABYC H-24.15.8.1 and the clamps per USCG 33 CFR Part 183.564.
6. Certify or replace the fixed fire suppression tanks per USCG 46 CFR section 142.240 and NFPA 10 section 9.3.3
7. The flybridge compass is cracked. Repair or replace per USCG 46 CFR Part 184.402
8. The ship's horn does not sound. Repair or replace per USCG 33 CFR Part 84.
9. The propane tank is not in a designated locker with an overboard drain. Re-locate the propane tank to a designated locker with a dedicated vent at the bottom per ABYC A-1.9.
10. The flares are expired and there is no distress flag. Ensure current flares and a daytime distress are aboard the vessel per USCG 33 CFR section 175.130.
11. There is no manual release for the fixed fire suppression system. Install a manual release device at the helms per ABYC A-4.8.2.
12. There is no carbon monoxide monitor. Install a marine rated carbon monoxide alarm per ABYC A-24.9.1.2 requirement for vessels with a fixed fire suppression tank.
13. The head AC electrical outlet does not have a weather cover. This is considered a "wet location." Install a weather cover per ABYC E-11.14.1.



The mandatory standards promulgated by the United States Coast Guard (USCG), under the authority of title 46 United States Code, Title 33 and Title 46 Code of Federal Regulations (CFR), the voluntary standards and recommended practices developed by the American Boat and Yacht Council (ABYC) and the National Fire Protection Association (NFPA) have been used as guidelines in the conduct of this survey. Items listed under “recommendations” are repair or deficiency items which are required or recommended by one of these survey standards or practices, or which, in the surveyor’s opinion, otherwise affect the soundness of the hull, the general seaworthiness of the vessel (considering its’ intended use) and/or the safety of the vessel’s operators and/or passengers.



MARKET ANALYSIS

If there is a wide divergence between actual prices of vessels sold and asking prices of vessels offered for sale, estimates provided by industry pricing guides have also been used in arriving at the market value of the surveyed vessel.

The vessel has a low retail value of \$6,500.00 and an average retail of \$15,600.00

Based on the average actual sale prices reported by Soldboats.com and the adjusted average listing price of Yachtworld.com and considering the condition of the vessel, the market value, not affected by undue stimulus, the Estimate of new replacement value \$323,000.00

32 ft 1983 Bayliner 3270 Motoryacht
\$13,000
San Diego, California, United States

32 ft 1983 Bayliner 3270 Motoryacht, Dolphin
\$6,500
Duluth, Minnesota, United States

Current Retail Value Range	\$24,600-\$27,300 126th edition.
Fair Market Value Adjusted for <u>BUC Condition</u> in the North Atlantic	\$24,600-\$27,300
Replacement Value	\$323,000

Fair Market Value is estimated at \$13,000.00

Respectfully submitted,

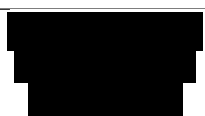
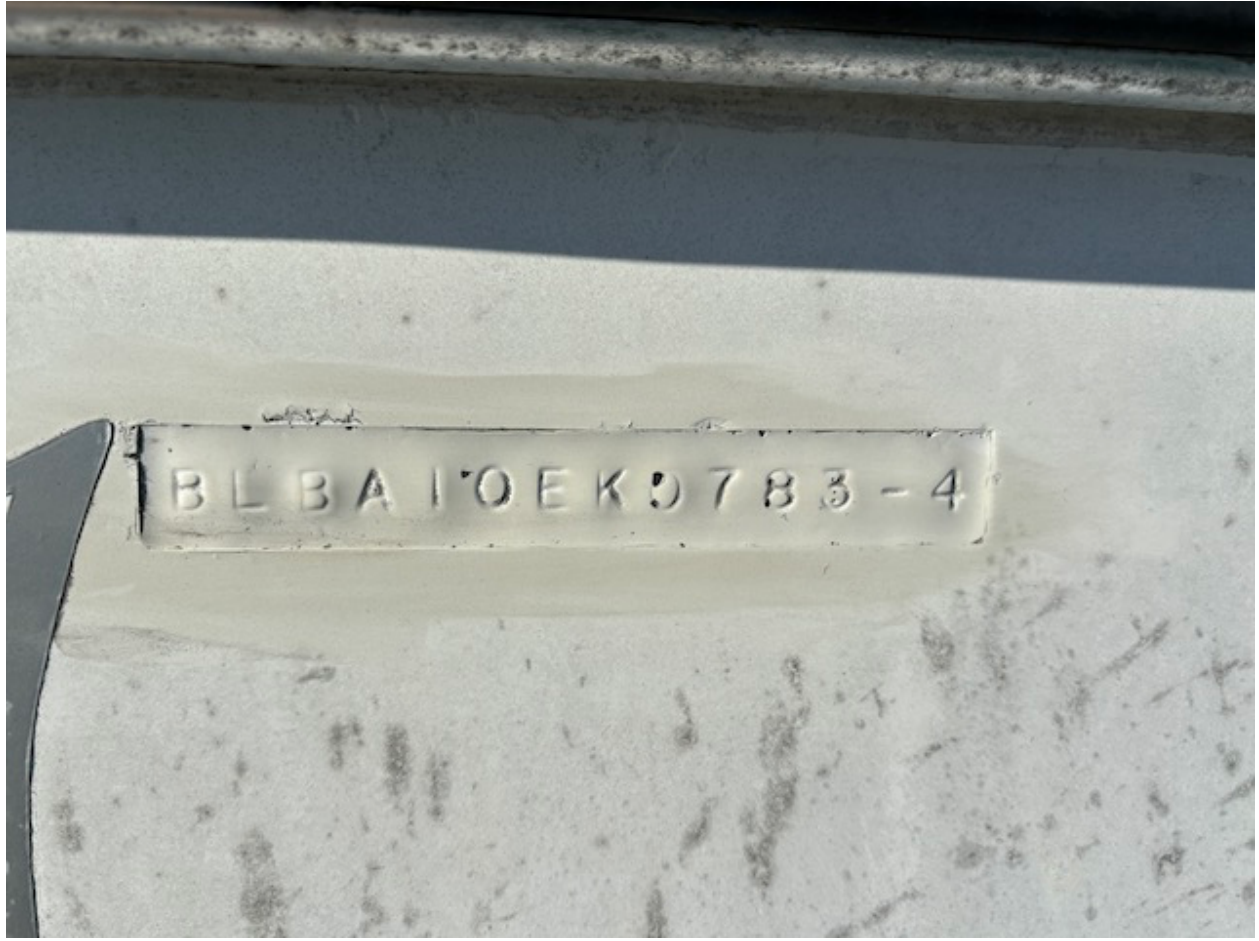
Duane Smets, Marine Surveyor, S.A.M.S. - SA
April 9, 2024

All specs and items listed in this survey are only a reflection of the day of the inspection and there are no promises implied to the conditions viewed by this company's inspector.



DESTACHE YACHT SERVICE





DESTACHE YACHT SERVICE



DESTACHE YACHT SERVICE



DESTACHE YACHT SERVICE



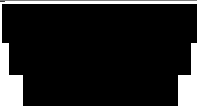
DESTACHE YACHT SERVICE

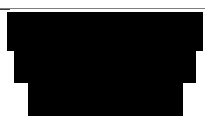


DESTACHE YACHT SERVICE



DESTACHE YACHT SERVICE

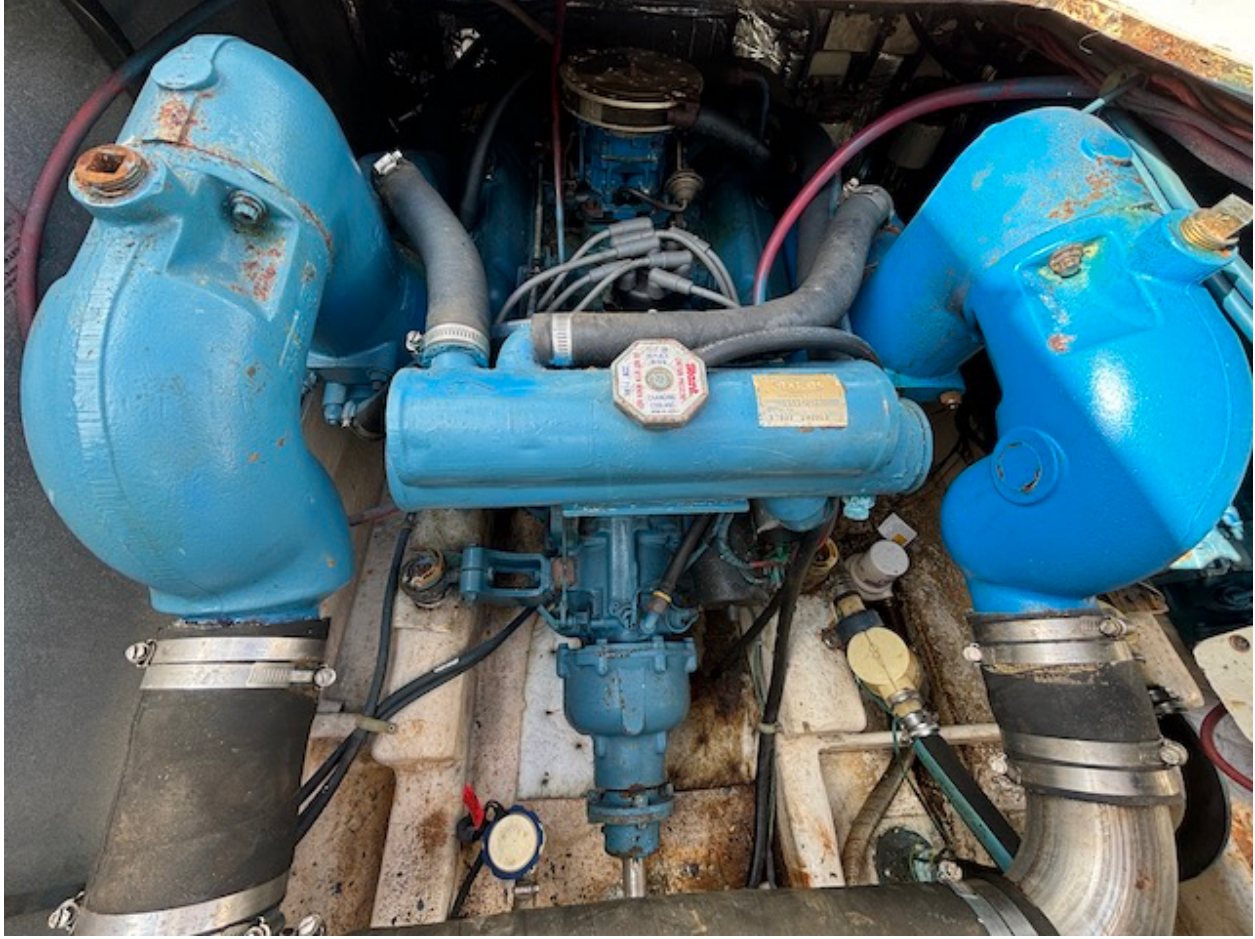




DESTACHE YACHT SERVICE



DESTACHE YACHT SERVICE



DESTACHE YACHT SERVICE



DESTACHE YACHT SERVICE



DESTACHE YACHT SERVICE



DESTACHE YACHT SERVICE



V8
CN 123456
RN 123456

WATERPUMP ENGINES
L. N. STEERING HEIGHTS, MICH. USA

MODEL NO. 100 T-60 SERIAL NO. 140580

THIS ENGINE MAY BE REPAIRED BY ANY ONE WHO HAS THE ADJ. REQUIRED

SPARK PLUGS: 1/2" DIA. 1/8" GAP 1/2" DIA. 1/8" GAP

FUEL REQUIREMENT: 100% AVG. 100% AVG.

ENGINE OIL: 100% AVG. 100% AVG.

REPAIR SERVICE BY DESTACHE YACHT SERVICE

Rusted and broken port a



Port aft engine motor mount.



Starboard shaft seal.



Starboard engine sea strainer



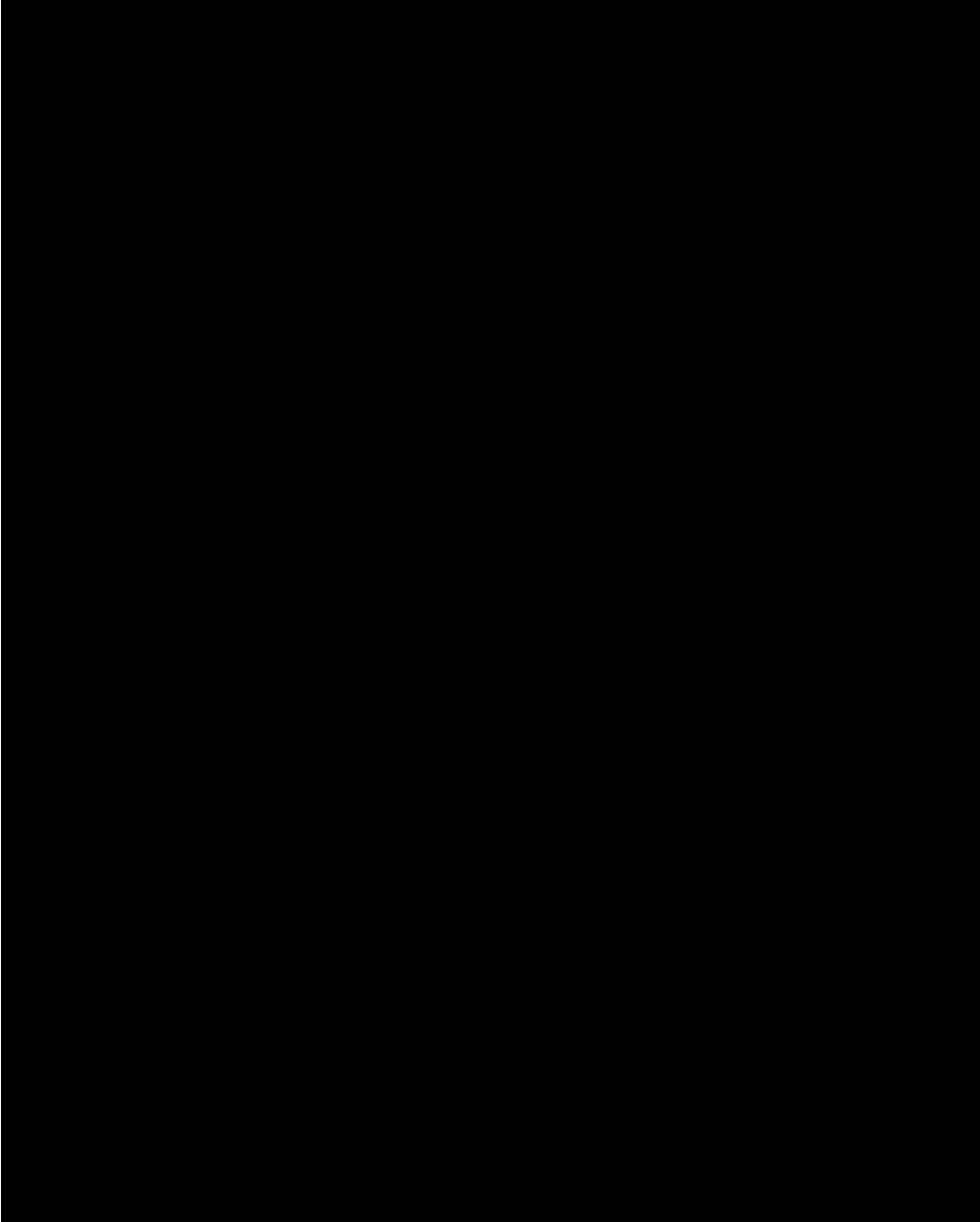
Forward starboard cockpit superstructure



Under pilot berth sink



Starboard engine water pump



Head toliet





Starboard exhaust riser

